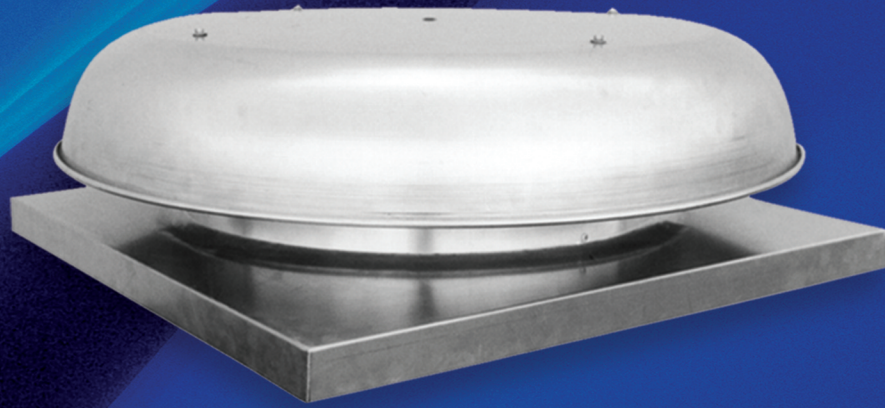




A New Wave In Air Movement



MODEL RSV

Spun Aluminum Ventilator

Intake and Relief Applications

Romlair Model RSV is a spun aluminum roof mounted gravity ventilator to be used on intake or relief applications. Attractive low silhouette design harmonizes with modern building design.

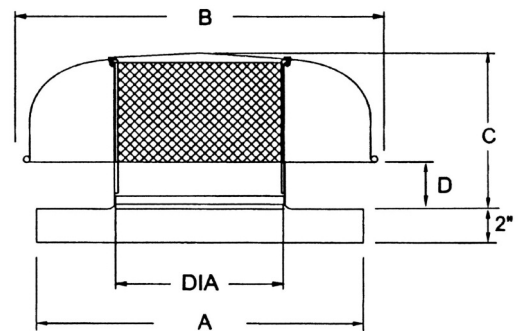
CONSTRUCTION FEATURES

- Compatible with spun dome power roof ventilators
- Gravity Relief-intake applications
- Designed for minimum resistance to airflow
- Shroud constructed of heavy gauge aluminum with a beaded edge for maximum strength
- Cover is easily detachable for access to interior
- Aluminum birdscreen
- Corrosion resistant design: All aluminum materials assembled with stainless steel fasteners ensure superior corrosion resistance and long life

These ventilators are ideally suited for...

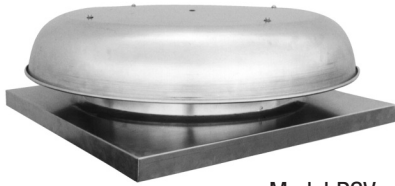
- WASTE WATER TREATMENT PLANTS
- PORT STORAGE FACILITIES
- COASTAL ENVIRONMENTS
- HOSPITALS, SCHOOLS & LABORATORIES
- Any application benefiting from a NON-FERROUS VENTILATOR

Dimensional Data



Model	A	B	C	E	DIA.	Net Wt.
RSV-8	18.50	19.25	8.00	3.00	8.50	14
RSV-10	18.50	21.50	8.75	3.50	1.05	15
RSV-12	20.50	26.00	10.38	3.75	12.50	19
RSV-14	24.75	27.50	11.25	4.25	14.50	21
RSV-16	24.75	29.50	11.25	4.25	16.50	23
RSV-18	28.38	33.50	11.50	4.50	18.50	26
RSV-20	28.38	36.50	11.75	4.75	20.50	27
RSV-24	33.50	39.50	12.50	5.50	24.50	30
RSV-30	36.50	48.00	15.25	6.25	30.50	44
RSV-36	44.50	56.00	15.25	6.25	36.50	48

MODEL RSV – Construction Features



Model RSV

The Performance data listed below is listed as total pressure drop through the ventilator.

Model	Intake Area (Ft ²)	Max CFM Intake
RSV-8	1.6	960
RSV-10	1.89	1134
RSV-12	2.80	1680
RSV-14	2.93	1758
RSV-16	3.22	1932
RSV-18	4.20	2520
RSV-20	4.92	2952
RSV-24	5.17	3102
RSV-30	7.54	4524
RSV-36	10.34	6204

Table based on 600 FPM maximum intake velocity. To prevent entry of air entrained moisture, maximum intake velocity should not exceed these values.

INTAKE PERFORMANCE – CFM CAPACITIES

Model	Throat Area (Ft ²)	.05 PD	.075 PD	.10 PD	.125 PD	.15 PD	.20 PD	.25 PD	.30 PD	.375 PD
RSV-8	.42	220	269	311	347	380	439	491	538	601
RSV-10	.63	330	404	466	521	570	659	736	807	902
RSV-12	.89	465	570	658	736	806	930	1040	1139	1274
RSV-14	1.19	662	762	880	983	1077	1244	1390	1525	1703
RSV-16	1.53	800	979	1131	1264	1385	1599	1788	1958	2189
RSV-18	1.92	1003	1229	1419	1586	1738	2006	2243	2457	2747
RSV-20	2.35	1228	1504	1736	1941	2127	2456	2745	3007	3362
RSV-24	3.34	1745	2137	2470	2759	3022	3490	3902	4275	4778
RSV-30	5.16	2698	3302	3812	4262	4669	5400	6027	6613	7382
RSV-36	7.07	3695	4525	5223	5840	6397	7386	8259	9046	10115

RELIEF PERFORMANCE – CFM CAPACITIES

Model	Throat Area (Ft ²)	.05 PD	.075 PD	.10 PD	.125 PD	.15 PD	.20 PD	.25 PD	.30 PD	.375 PD
RSV-8	.42	258	316	364	407	446	515	576	631	705
RSV-10	.63	386	473	546	611	669	772	864	947	1058
RSV-12	.89	546	668	772	863	945	1092	1220	1336	1494
RSV-14	1.19	730	893	1035	1153	1263	1460	1631	1787	1997
RSV-16	1.53	938	1149	1330	1483	1625	1754	2097	229	2568
RSV-18	1.92	1177	1441	1670	1860	2038	2355	2631	2883	3222
RSV-20	2.35	1440	1764	2037	2277	2494	2880	3220	3527	3944
RSV-24	3.34	2047	2507	2895	3236	3545	4093	4576	5013	5605
RSV-30	5.16	3162	3873	4471	4999	5476	6330	7070	7745	8658
RSV-36	7.07	4332	5306	6128	6850	7505	8665	9686	10611	11863

Pressure drop given is total pressure in inches W.G.

MODEL RSV ACCESSORIES

ROOF CURBS – Type CF and SF prefabricated roof curbs are available to ensure compatibility between the fan, curb, and roof opening.

RELIEF BACKDRAFT DAMPERS – Model RBD automatic backdraft dampers are available. These dampers are installed in the roof curb. 115 volt actuators are available for motorized operation.

INTAKE BACKDRAFT DAMPERS – Model RBD-s counterbalanced downflow dampers. These dampers are installed in the roof curb. 115 volt actuators are available for motorized operation.

INSECT SCREEN – Insect screens can be installed to prevent the entry of insects.

SPECIAL COATINGS – Special liquid coatings are available, including special color to match enamels, epoxies, and urethanes. Urethane powder coating are also available. Consult factory for information regarding which coating to use.



ROMLA VENTILATOR COMPANY
 9668 Heinrich Hertz Drive, Unit D
 San Diego, California 92154
 619/946-1224 • Fax 619/946-1227 • www.romlair.com

Distributed By

