

INSTALLATION INSTRUCTIONS MODEL RTC TRUCK COOLER

SHIPPING INSPECTION

Upon receiving unit, check for any damage and report it immediately to the shipper. Also check to see that all accessory items are accounted for.

INSTALLATION

1. Refer to Drawing "A" points 1 & 2 illustrating the mounting placement of the Wall Bracket. Place the bracket in place and mark the location of the lower left bolt hole. (marked #1 in dwg). The lower left bolt hole should be 102" above the floor level as shown in the drawing A. Minimize the "W" dimension trying to keep the fan close to the corner of the trailer.

2. A template is included to simplify the marking of the remaining holes. Keeping the bracket level, mark the remaining 3 holes with the template. (Marked #2 in dwg).

3. Place and attach with suitable fasteners (supplied by others) the wall bracket to the wall.

4. Place the "L" shaped support arm into the wall bracket, and position the "L" shaped arm per the following. The arm should be a distance of 13" from a closed dock door for a 5" outlet. The arm should be a distance of 17" for a 9" outlet. Secure the arm in place with the locking bolts. (See drawing "B").

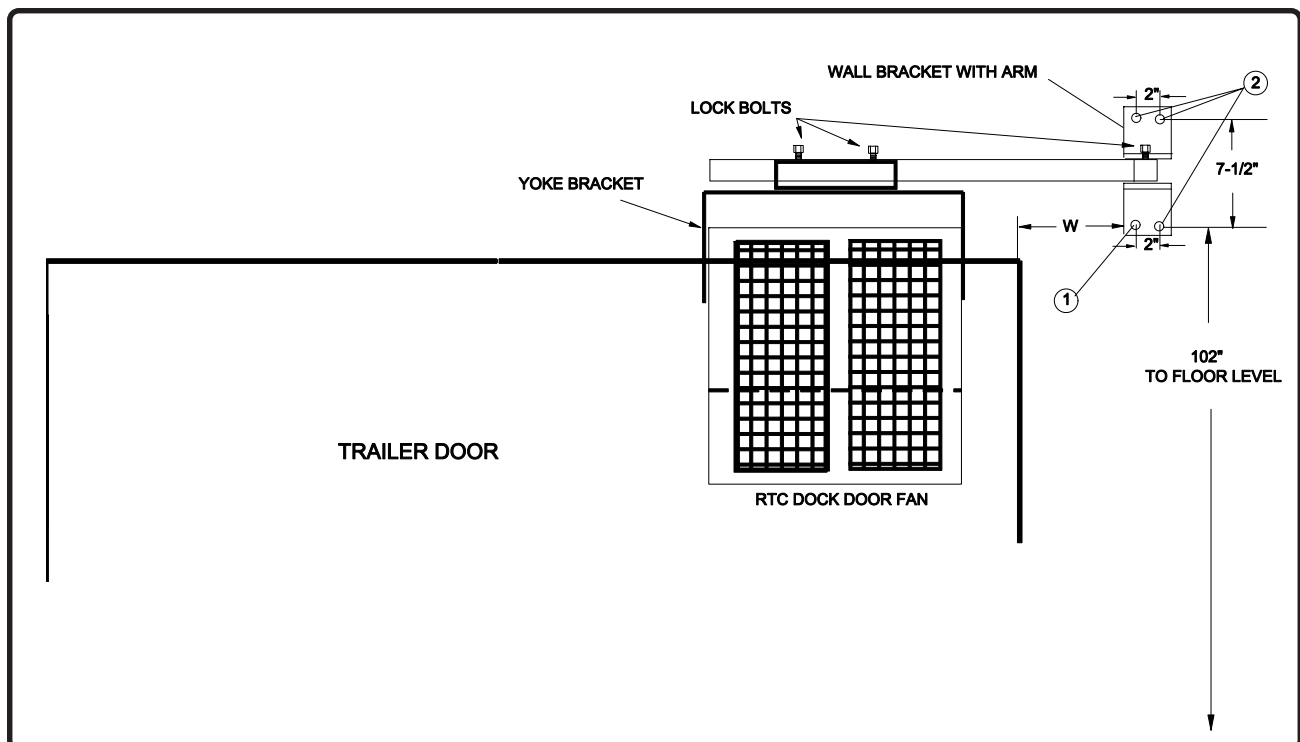


5. Lift the RTC Truck Cooler and slide into the the secured "L" shaped arm. The Fan should be positioned so that the fan outlet is in the upper corner of the door opening. Secure with the locking bolts.

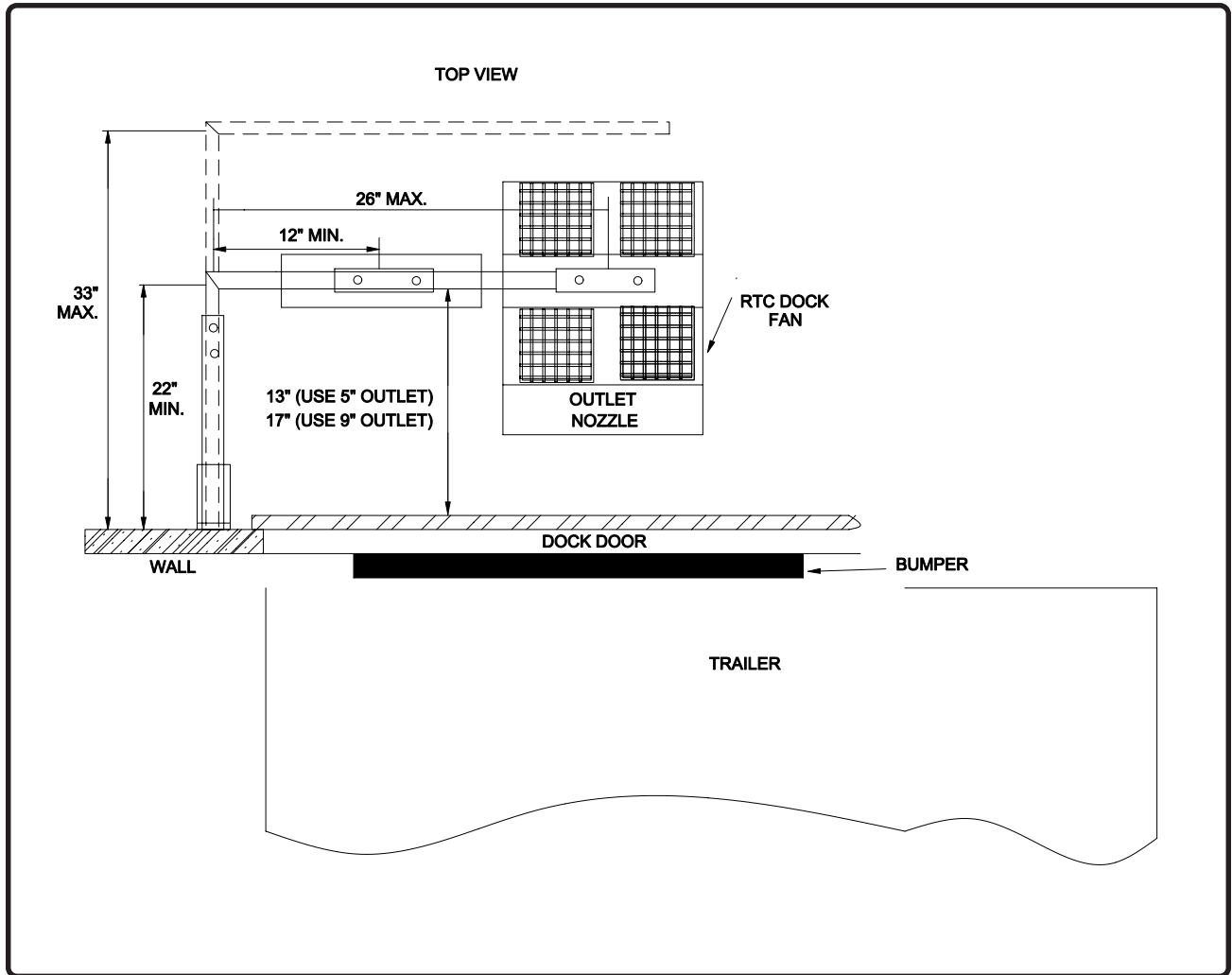
6. For best performance, tilt the RTC Truck Cooler up approximately 5 degrees. This can be done by loosening the side bracket bolts and then retightening when the correct position is obtained.

6. Hard wire to the junction box mounted on the side of the fan housing..

Drawing A



Drawing B



IMPORTANT SAFETY INFORMATION

1. Comply with all local, state and federal codes. Verify that the phase and voltage confirm to the motor and name plate information.
2. Motor needs to be adequately grounded.
3. Disconnect all remote power sources before performing any maintenance