



Model RVC
Motorized Control Damper

Standard Construction:

Frame: 5-1/2" x 7/8" x 16 Gauge Galvanized Steel Hat Channel

Blades: 16 Gauge Galvanized Steel

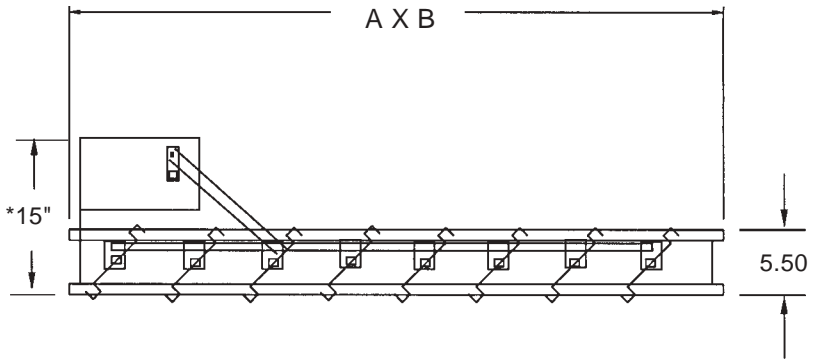
Axles: 1/2" Square Plated Steel, Stub.

Bearings: Non-Metallic Celcon.

Linkage: Plated Steel Bar and Crank Plates With Stainless Steel Pivots, In-Jamb Type.

Stops: 18 Gauge Galvanized Steel At Head and Seal.

Finish: Mill.



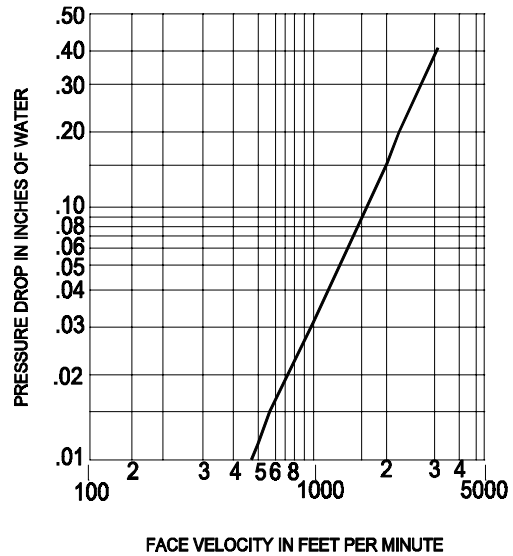
*Note: Dimension can vary due to different types of actuators and design changes. Please consult factory for exact dimension.

ROMLA VENTILATOR CO.
9668 Heinrich Hertz Drive • Unit D
San Diego, CA 92154
Ph: (619) 946-1224 Fax: (619) 946-1227

Available Options:

- Linkage: -On Blade
- Bearomgs: -Oil Impregnated Bronze
-Stainless Steel
- Seals: -Vinyl on Blade (-10°F to 150°F)
-Silicone on Blade (-40° to 350°F)
-Stainless Steel Jamb (-40°F to 350°F)
- HD Constr: -3000 F.P.M. Maximum Velocity-See Notes

PRESSURE DROP



TYPICAL PERFORMANCE CURVE
TESTED PER AMCA STANDARD 500: FIGURE 5.3:
SIZE TESTED - 42" X 42"

QTY	O.D. DIMENSION		FRAME	MOUNTING		MOTORIZED		VOLTS	PH	HZ	OPTIONS
	A	B		VERT.	HORTZ	YES	NO				

<p>PROJECT:</p> <p>LOCATION:</p> <p>SUBMITTED BY:</p> <p>DATE:</p>	<p>CONTRACTOR:</p> <p>ENGINEER:</p> <p>APPROVED BY:</p> <p>DATE:</p>
--	--